

Parentkind

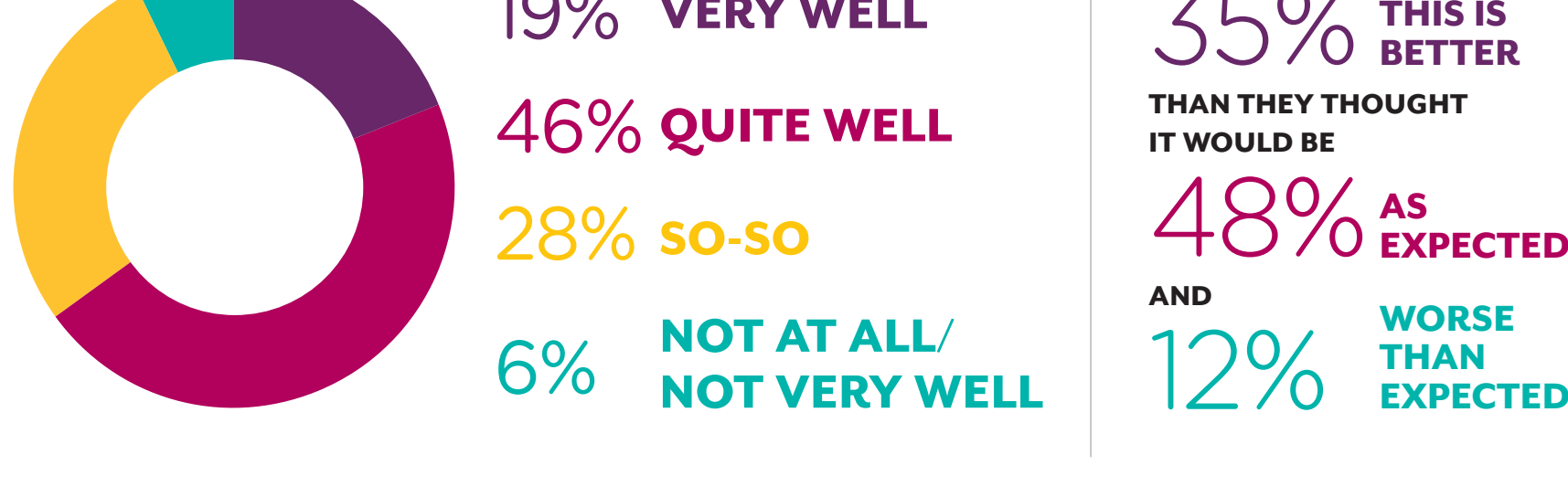
CORONAVIRUS: SECOND PARENT SURVEY RESULTS

Northern Ireland responses – May 2020

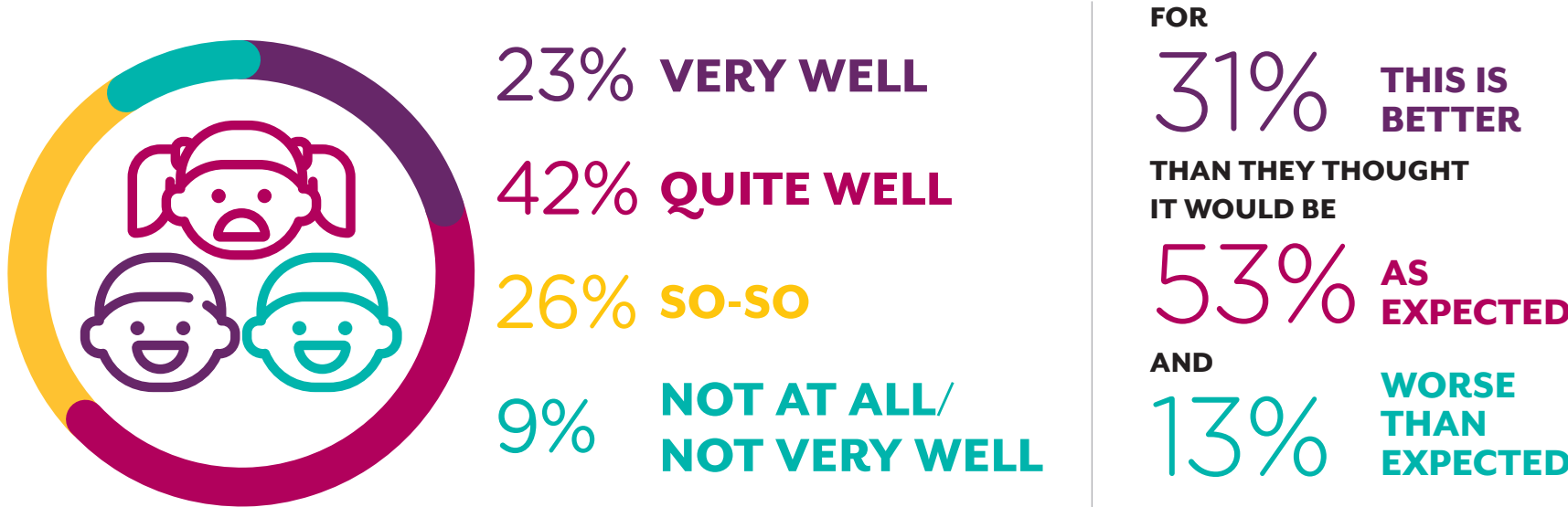
Detail of the research

A short online survey, promoted to parents of school age children via social media, which was active between 5pm on 23rd April and 9am on 4th May. 257,392 parents, representing 427,500 pupils, completed the survey, of which 1,795 respondents were based in Northern Ireland. Please note percentages may not add up to 100% due to don't knows and rounding.

How are you coping with the current lockdown measures?



How are you coping with different arrangements for your child/children's schooling?



Supporting your children

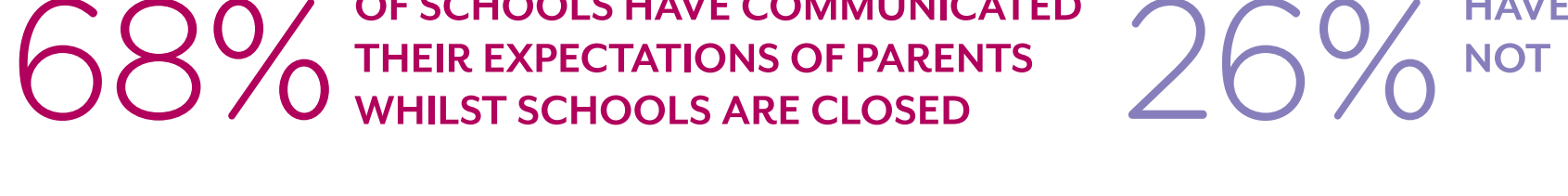
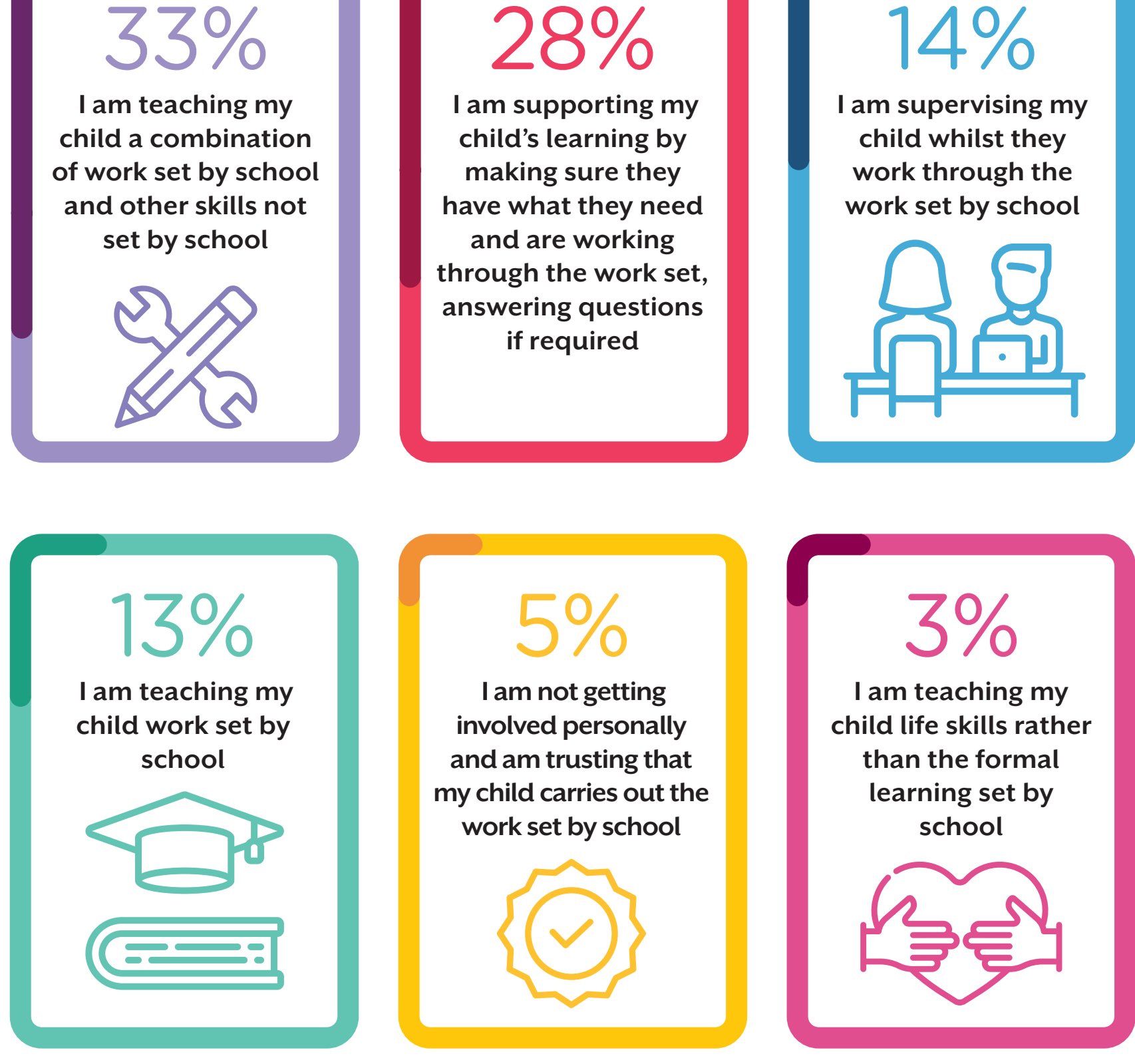
How confident do you feel supporting your child's learning?



How does this compare to the start of the school closures in March?



Your role during lockdown



Support & Resources

Support/resources which would be most helpful from your child's school (top 5 responses)

- 1 **Video clips** to explain subject matter (45%)
- 2 **Direct communication** between child and their teachers (44%)
- 3 **Feedback from teachers** on work completed (44%)
- 4 **Live online classes** (42%)
- 5 **Reassurances about learning expectations** during school closures (41%)

Support/resources parents/children are receiving from school (top 5 responses)

- 1 **Worksheets** to print at home (60%)
- 2 **Feedback from teachers** on work completed (46%)
- 3 **Direct communication** between child and their teachers (44%)
- 4 **Activities** that support my child's wellbeing (37%)
- 5 **Hard copies** of worksheets (36%)

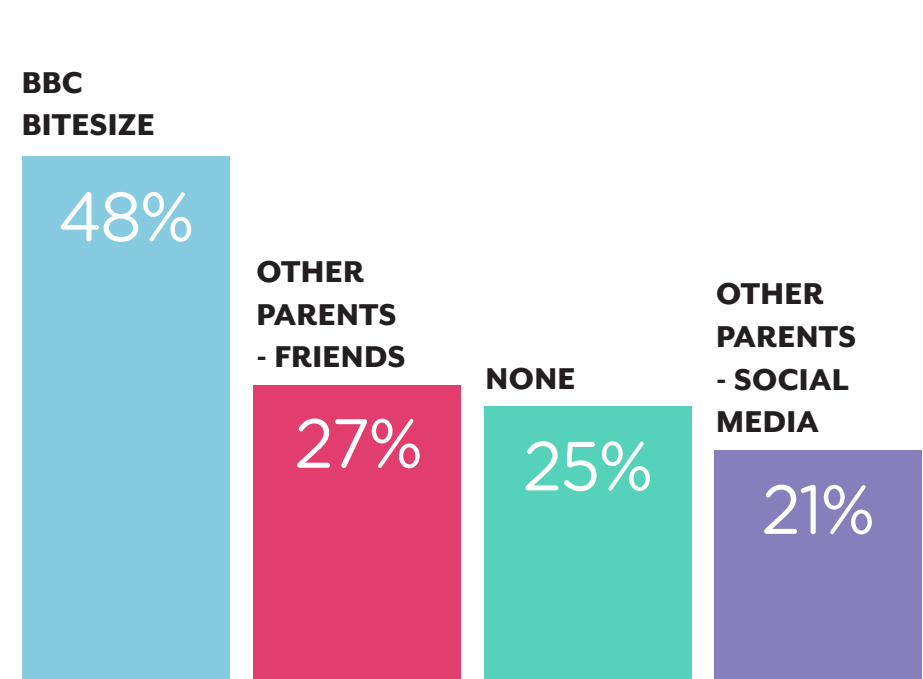
How satisfied are you with the home learning support from your school?



How well has school communicated with you during the school closures?

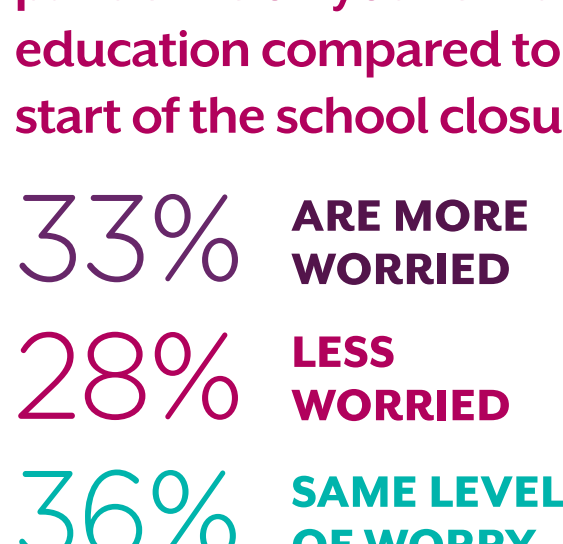


Where else have parents gone for support/resources whilst schools are closed? (top 4 responses)



Impact of coronavirus on education

How worried are you now about the impact of the pandemic on your child's education compared to the start of the school closures?



What's the biggest concern as a parent about the coronavirus pandemic? (top 6 responses)

- 1 My child not seeing their friends and socialising (46%)
- 2 My child missing out on learning from teachers (45%)
- 3 My child's mental health (36%)
- 4 One or more of my family members catching Covid-19 (34%)
- 5 My ability to juggle working and support my child's learning (34%)
- 6 My child falling behind their classmates (28%)

When would parents be happy for their child to return to school?

- 27% I'd feel comfortable with a September return date, but I'd like it to be confirmed now
- 25% Only when the government says it is safe to do so
- 19% Only when school leaders/teachers say it is safe to do so
- 11% Only when staff and pupils at my child's school have been vaccinated against Covid-19 even if this in 12-18 months' time
- 9% As soon as the lockdown ends
- 6% Other
- 4% I'd feel comfortable with a July return date, but I'd like it to be confirmed now

